



Pennsylvania
Department of Health

11/10/2025

School Immunizations and Reporting Review 2025

Janine Strick, BSN, RN

School Regulations

- The Pennsylvania code §23.86 - School Reporting
- (a) A public, private, parochial or nonpublic school in this Commonwealth, including vocational schools, intermediate units, special education and home education programs, and cyber and charter schools, shall report immunization data to the Department electronically by December 31 of each year using a format and system provided by the Department.
- ❖ The reporting period is open from Dec. 1 through Dec. 31 each year through the SILR.

<http://www.pacodeandbulletin.gov/Display/pacode?file=/secure/pacode/data/028/chapter23/subchapCtoc.html>



30 Days to Provide Records

§ 23.85. Responsibilities of schools and school administrators.

(2) The child, when moving or transferring into a school in this Commonwealth, is **unable to provide immunization records immediately upon enrollment** into the school. The child's parent or guardian shall have **30 days to provide immunization records** to the school to show proof of immunization as set forth in § 23.83, a medical certificate as set forth in subsection (e) or to satisfy the requirements for an exemption as set forth in § 23.84. A child who is unable to provide the necessary records, medical certificate or exemption may be excluded at the end of the 30-day period and in subsequent school years until the requirements of this subchapter are met.

- ❖ The 30 days is given for parents or guardians to provide the immunization records when the parent is unable to provide them immediately, not 30 days to be up to date on immunizations and; not the time parents or guardians will have to provide them to the school when they have already obtained them.



Exemptions

§ 23.84. Exemption from immunization.

(a) **Medical exemption.** Children need not be immunized if a physician or the physician's designee provides a written statement that immunization may be detrimental to the health of the child. When the physician determines that immunization is no longer detrimental to the health of the child, the child shall be immunized according to this subchapter.

(b) **Religious exemption.** Children need not be immunized if the parent, guardian or emancipated child objects in writing to the immunization on religious grounds or on the basis of a strong moral or ethical conviction similar to a religious belief.

- ❖ The medical exemption is a written statement by the physician stating that it can be detrimental to the health of the child. It is not to be used when a physician feels a child is up to date when they are not.



Prior to Admission

§ 23.85. Responsibilities of schools and school administrators.

(a) Inform of requirements and ascertain immunization status. The administrator in charge of a school shall appoint a knowledgeable person to perform all of the following:

- (1) Inform the parent, guardian or emancipated child at registration or prior to registration, if possible, of the requirements of this subchapter.
- (2) Ascertain the immunization status of a child prior to admission to school or continued attendance at school.



Multidose Vaccine – 5 days

§ 23.85. Responsibilities of schools and school administrators.

(e) Provisional admittance to school.

(1) **Multiple dose vaccine series.** If a child has not received all of the antigens for a multiple dose vaccine series described in § 23.83 on the child's first day of attendance for that school year, the school administrator or the school administrator's designee **may not provisionally admit the child to school unless the child has at least one dose of each multiple** dose vaccine series required under § 23.83, and one of the following occurs:

- (i) The child receives the final dose of each multiple dose vaccine series required under § 23.83 within 5 school days of the child's first day of attendance, and the child's parent or guardian provides a certificate of immunization on or before the 5th school day.
- (ii) If the child needs additional doses of a multiple dose vaccine series to meet the requirements of § 23.83, the child receives the next scheduled dose during the 5 school days referenced in subparagraph (i), and the child's parent or guardian provides a medical certificate on or before the 5th school day scheduling the additional required doses.



Multidose Vaccine continued

- (iii) If the child needs additional doses of a multiple dose vaccine series to meet the requirements of § 23.83, but the next dose is not medically appropriate during the 5 school days referenced in subparagraph (i), the child's parent or guardian provides a medical certificate on or before the 5th school day scheduling the additional required doses.

- ❖ For a multidose vaccine, a child must have at least one dose of the multidose vaccine to start school on the first day. If they do not have at least one dose of a multidose vaccine they may not be admitted to school.

- ❖ By the 5th day children must be medically up to date with vaccinations and have a medical plan signed by a physician with the dates for the next vaccine doses due but not yet given while waiting on spacing. If they miss the next doses listed on the medical plan, they may not attend.



Single Dose Vaccine

§ 23.85. Responsibilities of schools and school administrators.

(2) **Single dose vaccines.** If a child has not received a vaccine for which only a single dose is required on the child's first day of attendance for that school year, the child may not be admitted to school.

- ❖ This is mostly an issue with 7th grade Tdap and MCV. If the child does not have one dose of the single dose vaccines, they may not be admitted to school.



Introduction to the SILR

- Enter your SILR data **online from Dec. 1 through Dec. 31** at <http://SILR.health.pa.gov>
- Include all students currently enrolled in kindergarten, 7th and 12th grades and report homeschooled students separately. Homeschooled students ungraded should be reported for the grade they would normally be in based on their age in kindergarten, 7th and 12th grades.
- Preschool/daycare settings *with* kindergarten are required to report.
- Those presently *without* kindergarten **but are licensed to have a kindergarten, are required** to report by completing the online exclusion in the SILR.
- Do not include any data of **pre-school or pre-k students** in the responses. Only kindergarten students should be included in the responses.
- You will not be able to advance in the online SILR unless entry is made in all fields. Place a zero in a box where there is no information that applies.



Home Screen



School Immunization Law Report (SILR)

Friday, July 20, 20

v3.2.0

Menu

Links:

[School Procedure Manual](#)
[Pa. Health Immunizations
Immunization Schedule](#)
[EdNA](#)
[Vaccine Identification](#)

[SILR Instructional Packet](#)
[Register](#)
[Log In](#)

Please note: If you have already registered, please proceed to the *Login* screen by selecting *Log In* from the left navigation menu. Otherwise, please register by selecting *Register* from the menu. Please see the *Help* link for more information.

This website is best viewed with Internet Explorer 11.x and below, in compatibility mode, with Windows 7 (32-bit or 64-bit) operating system.

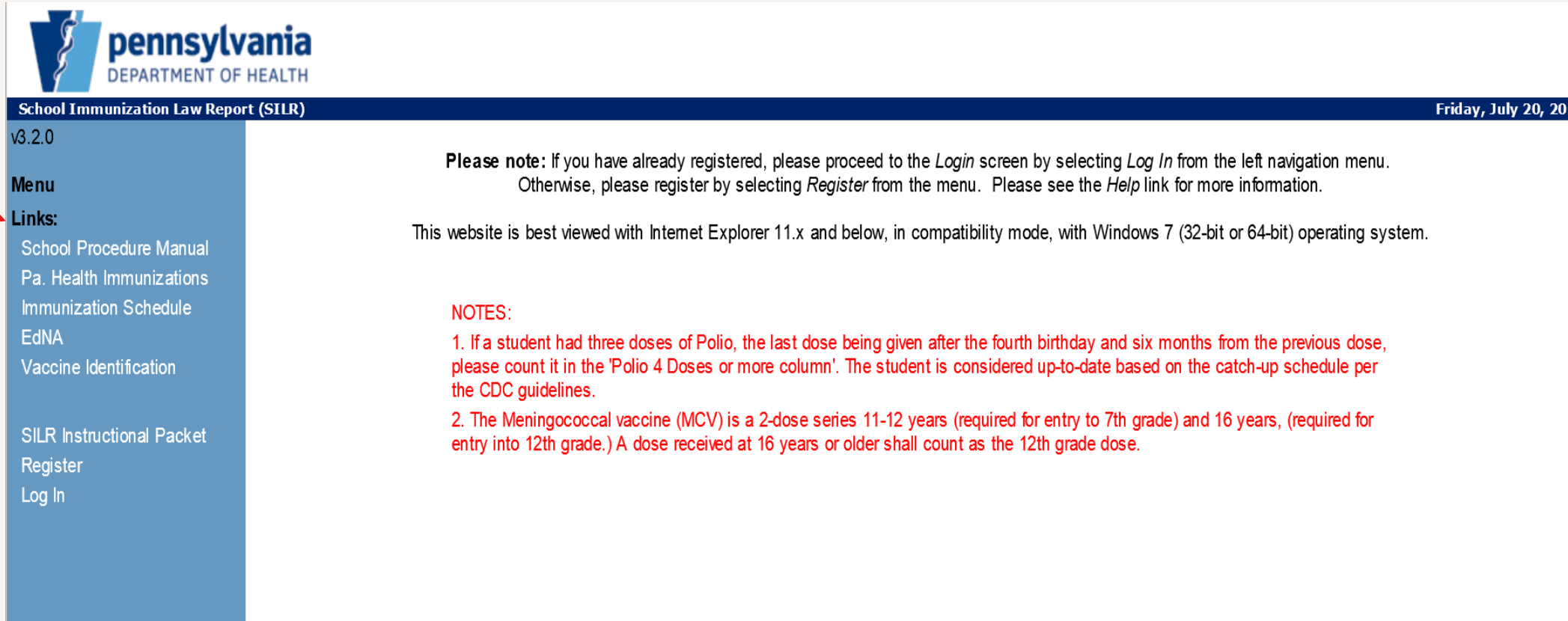
NOTES:


1. If a student had three doses of Polio, the last dose being given after the fourth birthday and six months from the previous dose, please count it in the 'Polio 4 Doses or more column'. The student is considered up-to-date based on the catch-up schedule per the CDC guidelines.
2. The Meningococcal vaccine (MCV) is a 2-dose series 11-12 years (required for entry to 7th grade) and 16 years, (required for entry into 12th grade.) A dose received at 16 years or older shall count as the 12th grade dose.

This is a copy of the home screen of the SILR database.



Educational Links



 **pennsylvania**
DEPARTMENT OF HEALTH

School Immunization Law Report (SILR) Friday, July 20, 2012

v3.2.0

Menu

Links:

- School Procedure Manual
- Pa. Health Immunizations
- Immunization Schedule
- EdNA
- Vaccine Identification

- SILR Instructional Packet
- Register
- Log In

Please note: If you have already registered, please proceed to the *Login* screen by selecting *Log In* from the left navigation menu. Otherwise, please register by selecting *Register* from the menu. Please see the *Help* link for more information.

This website is best viewed with Internet Explorer 11.x and below, in compatibility mode, with Windows 7 (32-bit or 64-bit) operating system.

NOTES:

1. If a student had three doses of Polio, the last dose being given after the fourth birthday and six months from the previous dose, please count it in the 'Polio 4 Doses or more column'. The student is considered up-to-date based on the catch-up schedule per the CDC guidelines.
2. The Meningococcal vaccine (MCV) is a 2-dose series 11-12 years (required for entry to 7th grade) and 16 years, (required for entry into 12th grade.) A dose received at 16 years or older shall count as the 12th grade dose.

The educational links can be accessed in the blue shaded areas.



Online SILR Registration Information

pennsylvania
DEPARTMENT OF HEALTH

School Immunization Law Report (SILR) Friday

v3.2.0

Menu

Links:

- School Procedure Manual
- Pa. Health Immunizations Immunization Schedule
- EdNA
- Vaccine Identification
- SILR Instructional Packet**
- Register**
- Log In

1. Please enter your school(s) AUN and school/branch number. When entering multiple schools, use one registration for all schools.

Add to Selected Schools: **Selected Schools (Must have at least one school):**

AUN - **School/branch**

-

(123456789) (1234)
Required Field

2. User Registration (All fields are required):

First name:

Last name:

Job title:

Phone number:

Email address:

Username:

Password:

Confirm password:

Please note the following: Passwords are case sensitive; must be at least 8 characters long and no more than 15 characters; must contain 3 out of the following 4: (1) uppercase LETTER, (2) lower case letter, (3) special character, (4) number; cannot be the same as your username, first name, last name, or be the same as any of the previous passwords you used; expires

3. Register:

Note: If you are responsible for entering data for more than one school, please select multiple schools and only register once. Changes to your account (including addin

Click the **Register** link in the blue shaded area if you have not previously registered with the SILR.



Registration is Only for First-Time Users

- Enter the school district's nine-digit Administrative Unit Number (AUN) and four-digit school/branch number. *Please report all schools with an AUN separately.*
- Click on the **Add >** button to add school(s) to the **Selected Schools** list. (If you have more than one school, type in that AUN as well and click **Add >** until you get all your schools listed.)
- Complete the user registration data and create a password.
- Click Register.



Login - For Those Already Registered

- Click the Login link.
- Enter username and password from your previous entry. **(Do not re-register.)**
- You will be asked to update your password **after 60 days**; please follow the instructions.
- Keep your username and password in a safe place and do not share your password.
- If you *change to a different school district*, you **do not** need to re-register.
 - ✓ Modify the appropriate school information and update your email address.
- When updating your password, give it a few minutes to register. Click out of the database and sign back in with the new password.



Login Credentials

Review credential information:

- If these credentials are not yours, please log off.
 - Using others' credentials is considered a breach of the system.
 - Register for your own account using the Log Out and then Register.
 - If this is you, verify the information.
 - If the information is incorrect, update your information using the My Account link in the blue shaded area on the main SILR screen.
-
- ❖ Registration is to be done individually and should not be used by multiple people at a school. Never use the previous nurse's username or password. Please review your account and update information if it has changed.



Change Password



v3.2.0
Username: jsmith1
Menu
Add Report
Search Reports
Links:
School Procedure Manual
Pa. Health Immunizations
Immunization Schedule
EdNA
Vaccine Identification

SILR Instructional Packet
My Account
Log Out

Change Password

You can change your password, either by choice, because of 5 failed password attempts and/or your password has expired and must be changed.

Username:

Old password:

New password:

Confirm new password:

Please note the following:

- Passwords are case sensitive.
- Passwords must be at least 8 characters long and no more than 15 characters.
- Passwords must contain 3 out of the following 4: (1) CAPITAL LETTER, (2) lower case letter, (3) special character, (4) number.
- Passwords cannot be the same as your username, first name, or last name.
- Passwords cannot be the same as any of the previous passwords you used.
- Passwords expire after 60 days and must be changed in order to gain access to this system.

Passwords must be changed every 60 days. Please follow the guidelines for creating a new password.



Forgot Password?



School Immunization Law Report (SILR)

Monday, September 12, 2022

v2022.4.0.0

Menu

Links:

- School Procedure Manual
- Pa. Health Immunizations Immunization Schedule
- EdNA
- Vaccine Identification

SILR Instructional Packet

- Register
- Log In

Please enter your Username and then click the 'Forgot your Password? Click here.' link again.

Login

Username: Case sensitive.

Password: Case sensitive.

Login

[Forgot your password? Click here.](#)

[Forgot your User Name? Click here.](#)

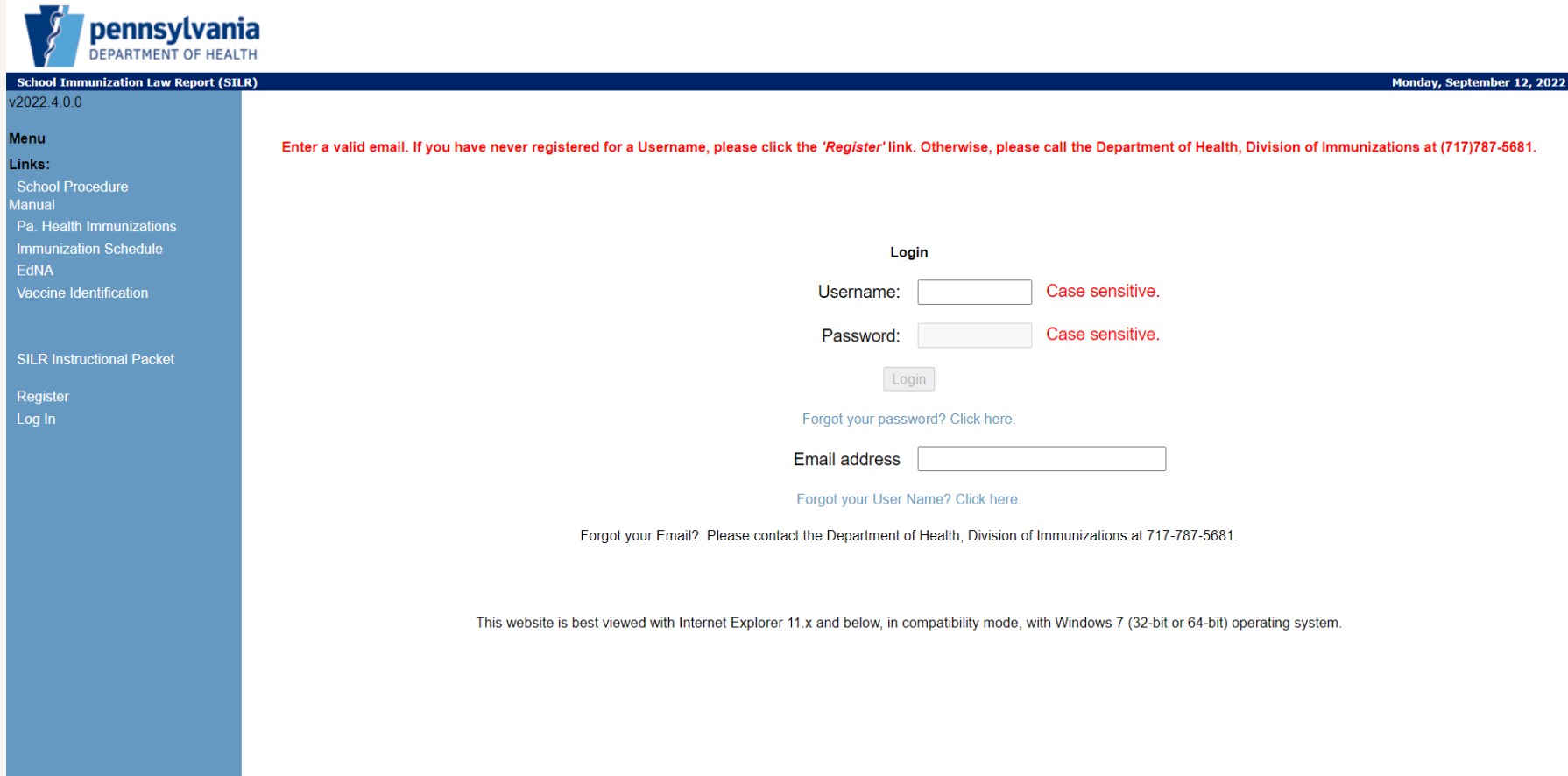
Forgot your Email? Please contact the Department of Health, Division of Immunizations at 717-787-5681.

This website is best viewed with Internet Explorer 11.x and below, in compatibility mode, with Windows 7 (32-bit or 64-bit) operating system.

If you have forgotten your password, you can have the old password sent to you as long as the email that you registered with is the same.



Forgot Username?



pennsylvania
DEPARTMENT OF HEALTH

School Immunization Law Report (SILR) v2022.4.0.0 Monday, September 12, 2022

Menu
Links:
School Procedure Manual
Pa. Health Immunizations Immunization Schedule EdNA
Vaccine Identification

SILR Instructional Packet

Register
Log In

Enter a valid email. If you have never registered for a Username, please click the 'Register' link. Otherwise, please call the Department of Health, Division of Immunizations at (717)787-5681.

Login

Username: Case sensitive.

Password: Case sensitive.

[Forgot your password? Click here.](#)

Email address

[Forgot your User Name? Click here.](#)

[Forgot your Email? Please contact the Department of Health, Division of Immunizations at 717-787-5681.](#)

This website is best viewed with Internet Explorer 11.x and below, in compatibility mode, with Windows 7 (32-bit or 64-bit) operating system.

Your username can also be sent to you via email if you have forgotten it and will be sent to the email that you had registered with.



School Selection Screen

v3.1.2
Username: tester

Menu
Add Report
Search Reports

Links:
School Procedure Manual (.pdf 839KB)
Pa. Health Immunizations Immunization Schedule
EdNA
Vaccine Identification

SILR Instructional Packet
My Account
Log Out

Select School Records found: 2

AUN-School/branch	School name	EdNA website	School District	Input
123456789-5678	One Great El Sch	View EdNA data	One Great SD	Input data
123456789-1234	One Great MS	View EdNA data	One Great SD	Input data

Cancel

- ❖ If a school nurse is assigned more than one school, this screen will be displayed to choose your school before going to the input data screen.
- ❖ If only one school is assigned, this screen will be bypassed and will go directly to the input data screen.



Select Exclusion Reason

Report Details

School Information: 123456789-1234 - One Great MS Add Report

**Commonwealth of Pennsylvania
School Immunization Law Report**

School year beginning:

If your school should be excluded, please select a reason.

No Student Enrollment
School is closed
Students are enrolled at home school district
There is no K, no seventh, and no 12th grade

Of school's immunization data.

This is a copy of the exclusion screen and will be the first screen to be viewed once the school to report on is chosen.



Exclusion From Reporting

Select exclusion reason:

- If your school should be excluded, select the reason from the drop-down box.
 - 1) No student enrollment.
 - 2) School is closed.
 - 3) Students are enrolled at home school district.
 - 4) There is no kindergarten, no seventh or 12th grade.
 - Is this entity a preschool/daycare?
- You may print a copy of your exclusion.
- If you do not have an exclusion, click on Next and continue to the SILR.
- ❖ A closed school refers only to a permanently closed school.



Exclusion From Reporting

- Alternative schools such as part time Vocational Technical Schools, do not need to report as long as the home school district is completing the SILR, counting those students in their enrollment and maintaining their records.
- All alternative schools that are reported by the home school district will need to submit its exclusion reason online in the beginning of the SILR.
- Alternative schools that use the exclusion should contact all home school districts to make sure the children are being reported in the home school.

Also, home schools should contact all alternative school to make sure children are not doubly counted and share copies of the immunization records. This will help for preparation if there is an outbreak of a vaccine preventable disease in either school.



SILR Review

Commonwealth of Pennsylvania
School Immunization Law Report

School year beginning:

Please select the active grades within your school (all that apply):
 Kindergarten Seventh grade 12th grade

Grade Section	A # of Students Enrolled	B # of Students Medical Exempt	C # of Students Religious Exempt	D # of Students Philosophical / Strong Moral or Ethical Conviction Exempt	E # of Students Enrolled Provisionally	F # of Students Denied Admission or Attendance	G # of students Non- Compliant and Attending
Kindergarten	<input type="text" value="0"/>	<input type="text" value="0"/>	<input type="text" value="0"/>	<input type="text" value="0"/>	<input type="text" value="0"/>	<input type="text" value="0"/>	<input type="text" value="0"/>
Kindergarten - Home School	<input type="text" value="0"/>	<input type="text" value="0"/>	<input type="text" value="0"/>	<input type="text" value="0"/>	<input type="text" value="0"/>	<input type="text" value="0"/>	<input type="text" value="0"/>
Seventh grade	<input type="text" value="0"/>	<input type="text" value="0"/>	<input type="text" value="0"/>	<input type="text" value="0"/>	<input type="text" value="0"/>	<input type="text" value="0"/>	<input type="text" value="0"/>
Seventh grade - Home School	<input type="text" value="0"/>	<input type="text" value="0"/>	<input type="text" value="0"/>	<input type="text" value="0"/>	<input type="text" value="0"/>	<input type="text" value="0"/>	<input type="text" value="0"/>
12th grade	<input type="text" value="0"/>	<input type="text" value="0"/>	<input type="text" value="0"/>	<input type="text" value="0"/>	<input type="text" value="0"/>	<input type="text" value="0"/>	<input type="text" value="0"/>
12th grade - Home School	<input type="text" value="0"/>	<input type="text" value="0"/>	<input type="text" value="0"/>	<input type="text" value="0"/>	<input type="text" value="0"/>	<input type="text" value="0"/>	<input type="text" value="0"/>

Grade Section	DTaP/DI 4 doses or more	Polio 4 doses or more	MMR 2 doses or more	Hep B 3 doses or more	Varicella had disease	Varicella 2 doses	Tdap/Td 1 dose	Ages 11-12 MCV 1 dose	16 Years or Older MCV 1 dose	MCV 2 doses
Kindergarten	<input type="text" value="0"/>	<input type="text" value="0"/>	<input type="text" value="0"/>	<input type="text" value="0"/>	<input type="text" value="0"/>	<input type="text" value="0"/>				
Kindergarten - Home School	<input type="text" value="0"/>	<input type="text" value="0"/>	<input type="text" value="0"/>	<input type="text" value="0"/>	<input type="text" value="0"/>	<input type="text" value="0"/>				
Seventh grade	<input type="text" value="0"/>	<input type="text" value="0"/>	<input type="text" value="0"/>	<input type="text" value="0"/>	<input type="text" value="0"/>	<input type="text" value="0"/>	<input type="text" value="0"/>	<input type="text" value="0"/>		
Seventh grade - Home School	<input type="text" value="0"/>	<input type="text" value="0"/>	<input type="text" value="0"/>	<input type="text" value="0"/>	<input type="text" value="0"/>	<input type="text" value="0"/>	<input type="text" value="0"/>	<input type="text" value="0"/>		

Bring together all homeschool numbers and make sure they are accurate.



Homeschooled is parent educated, not cyber schooled.

School Immunization Law Report

School year beginning:

Please select the active grades within your school (all that apply):
 Kindergarten Seventh grade 12th grade

Grade Section	A # of Students Enrolled	B # of Students Medical Exempt	C # of Students Religious Exempt	D # of Students Philosophical / Strong Moral or Ethical Conviction Exempt	E # of Students Enrolled Provisionally
Kindergarten	<input type="text" value="0"/>	<input type="text" value="0"/>	<input type="text" value="0"/>	<input type="text" value="0"/>	<input type="text" value="0"/>
Kindergarten - Home School (Parent Educated)	<input type="text" value="0"/>	<input type="text" value="0"/>	<input type="text" value="0"/>	<input type="text" value="0"/>	<input type="text" value="0"/>
Seventh grade	<input type="text" value="0"/>	<input type="text" value="0"/>	<input type="text" value="0"/>	<input type="text" value="0"/>	<input type="text" value="0"/>
Seventh grade - Home School (Parent Educated)	<input type="text" value="0"/>	<input type="text" value="0"/>	<input type="text" value="0"/>	<input type="text" value="0"/>	<input type="text" value="0"/>
12th grade	<input type="text" value="0"/>	<input type="text" value="0"/>	<input type="text" value="0"/>	<input type="text" value="0"/>	<input type="text" value="0"/>
12th grade - Home School (Parent Educated)	<input type="text" value="0"/>	<input type="text" value="0"/>	<input type="text" value="0"/>	<input type="text" value="0"/>	<input type="text" value="0"/>
	DTaP/DT	Polio	MMR	Hep B	Varicella

- ❖ Parent educated students are those that are listed under the home school column.
- ❖ Those educated by the district in a home bound or cyber school provided by the district should be counted in the regular school numbers.



Number of Students Enrolled

**Commonwealth of Pennsylvania
School Immunization Law Report**

School year beginning:

Please select the active grades within your school (all that apply):
 Kindergarten Seventh grade 12th grade

Grade Section	A # of Students Enrolled	B # of Students Medical Exempt	C # of Students Religious Exempt	D # of Students Philosophical / Strong Moral or Ethical Conviction Exempt	E # of Students Enrolled Provisionally	F # of Students Denied Admission or Attendance	G # of students Non-Compliant and Attending
Kindergarten	<input type="text" value="0"/>	<input type="text" value="0"/>	<input type="text" value="0"/>	<input type="text" value="0"/>	<input type="text" value="0"/>	<input type="text" value="0"/>	<input type="text" value="0"/>
Kindergarten - Home School	<input type="text" value="0"/>	<input type="text" value="0"/>	<input type="text" value="0"/>	<input type="text" value="0"/>	<input type="text" value="0"/>	<input type="text" value="0"/>	<input type="text" value="0"/>
Seventh grade	<input type="text" value="0"/>	<input type="text" value="0"/>	<input type="text" value="0"/>	<input type="text" value="0"/>	<input type="text" value="0"/>	<input type="text" value="0"/>	<input type="text" value="0"/>
Seventh grade - Home School	<input type="text" value="0"/>	<input type="text" value="0"/>	<input type="text" value="0"/>	<input type="text" value="0"/>	<input type="text" value="0"/>	<input type="text" value="0"/>	<input type="text" value="0"/>
12th grade	<input type="text" value="0"/>	<input type="text" value="0"/>	<input type="text" value="0"/>	<input type="text" value="0"/>	<input type="text" value="0"/>	<input type="text" value="0"/>	<input type="text" value="0"/>
12th grade - Home School	<input type="text" value="0"/>	<input type="text" value="0"/>	<input type="text" value="0"/>	<input type="text" value="0"/>	<input type="text" value="0"/>	<input type="text" value="0"/>	<input type="text" value="0"/>

Grade Section	DTaP/DI 4 doses or more	Polio 4 doses or more	MMR 2 doses or more	Hep B 3 doses or more	Varicella had disease	Varicella 2 doses	Tdap/Td 1 dose	Ages 11-12 MCV 1 dose	16 Years or Older MCV 1 dose	MCV 2 doses
Kindergarten	<input type="text" value="0"/>	<input type="text" value="0"/>	<input type="text" value="0"/>	<input type="text" value="0"/>	<input type="text" value="0"/>	<input type="text" value="0"/>				
Kindergarten - Home School	<input type="text" value="0"/>	<input type="text" value="0"/>	<input type="text" value="0"/>	<input type="text" value="0"/>	<input type="text" value="0"/>	<input type="text" value="0"/>				
Seventh grade	<input type="text" value="0"/>	<input type="text" value="0"/>	<input type="text" value="0"/>	<input type="text" value="0"/>	<input type="text" value="0"/>	<input type="text" value="0"/>	<input type="text" value="0"/>	<input type="text" value="0"/>		
Seventh grade - Home School	<input type="text" value="0"/>	<input type="text" value="0"/>	<input type="text" value="0"/>	<input type="text" value="0"/>	<input type="text" value="0"/>	<input type="text" value="0"/>	<input type="text" value="0"/>	<input type="text" value="0"/>		

Enter the total number of students enrolled for each grade as of the day you report. Again, the time frame to complete reporting is December 1st through December 31st.



Provisional Students

Add Report

**Commonwealth of Pennsylvania
School Immunization Law Report**

School year beginning: Please enter Year

Please select the active grades within your school (all that apply):

Kindergarten Seventh grade 12th grade

Grade Section	A # of Students Enrolled	B # of Students Medical Exempt	C # of Students Religious Exempt	D # of Students Philosophical / Strong Moral or Ethical Conviction Exempt	E # of Students Enrolled Provisionally	F # of Students Denied Admission or Attendance
Kindergarten	<input type="text" value="0"/>	<input type="text" value="0"/>	<input type="text" value="0"/>	<input type="text" value="0"/>	<input type="text" value="0"/>	<input type="text" value="0"/>
Seventh grade	<input type="text" value="0"/>	<input type="text" value="0"/>	<input type="text" value="0"/>	<input type="text" value="0"/>	<input type="text" value="0"/>	<input type="text" value="0"/>
12th grade	<input type="text" value="0"/>	<input type="text" value="0"/>	<input type="text" value="0"/>	<input type="text" value="0"/>	<input type="text" value="0"/>	<input type="text" value="0"/>

Grade Section	DTaP/DTP/DT 4 doses or more	Polio 4 doses or more	MMR 2 doses or more	Hep B 3 doses or more	Varicella had disease	Varicella 2 doses	Tdap/Td 1 dose	MCV 1 dose	(16+) MCV 1 dose	MCV 2 doses
Kindergarten	<input type="text" value="0"/>	<input type="text" value="0"/>	<input type="text" value="0"/>	<input type="text" value="0"/>	<input type="text" value="0"/>	<input type="text" value="0"/>	<input type="text" value="0"/>	<input type="text" value="0"/>		
Seventh grade	<input type="text" value="0"/>	<input type="text" value="0"/>	<input type="text" value="0"/>	<input type="text" value="0"/>	<input type="text" value="0"/>	<input type="text" value="0"/>	<input type="text" value="0"/>	<input type="text" value="0"/>		
12th grade	<input type="text" value="0"/>	<input type="text" value="0"/>	<input type="text" value="0"/>	<input type="text" value="0"/>	<input type="text" value="0"/>	<input type="text" value="0"/>	<input type="text" value="0"/>	<input type="text" value="0"/>	<input type="text" value="0"/>	<input type="text" value="0"/>

Notes:

Report submitted by:
(Submitter information based on user information,
which can be found by selecting the "My Account"
link.)

Was this report completed by a Nurse, School Nurse, RN,
CSN, LPN, CRNP, PA, DO, MD, or other medical
professional?

Yes No

Is the medical professional the
same person as the submitter?

Yes

- ❖ Provisional attendance includes children who are listed under McKinney-Vento (Homeless students) or those that are **medically up to date**.
- ❖ **Medically up to date students are behind on the vaccine series but** have all vaccines that they can obtain and are waiting on spacing for the next dose due. They must also have a medical plan with dates for the final vaccine doses needed.



Students Non-Compliant and Attending

Commonwealth of Pennsylvania
School Immunization Law Report

School year beginning:

Please select the active grades within your school (all that apply):
 Kindergarten Seventh grade 12th grade

Grade Section	A # of Students Enrolled	B # of Students Medical Exempt	C # of Students Religious Exempt	D # of Students Philosophical/ Strong Moral or Ethical Conviction Exempt	E # of Students Enrolled Provisionally	F # of Students Denied Admission or Attendance	G # of students Non- Compliant and Attending
Kindergarten	<input type="text" value="0"/>	<input type="text" value="0"/>	<input type="text" value="0"/>	<input type="text" value="0"/>	<input type="text" value="0"/>	<input type="text" value="0"/>	<input type="text" value="0"/>
Kindergarten - Home School	<input type="text" value="0"/>	<input type="text" value="0"/>	<input type="text" value="0"/>	<input type="text" value="0"/>	<input type="text" value="0"/>	<input type="text" value="0"/>	<input type="text" value="0"/>
Seventh grade	<input type="text" value="0"/>	<input type="text" value="0"/>	<input type="text" value="0"/>	<input type="text" value="0"/>	<input type="text" value="0"/>	<input type="text" value="0"/>	<input type="text" value="0"/>
Seventh grade - Home School	<input type="text" value="0"/>	<input type="text" value="0"/>	<input type="text" value="0"/>	<input type="text" value="0"/>	<input type="text" value="0"/>	<input type="text" value="0"/>	<input type="text" value="0"/>
12th grade	<input type="text" value="0"/>	<input type="text" value="0"/>	<input type="text" value="0"/>	<input type="text" value="0"/>	<input type="text" value="0"/>	<input type="text" value="0"/>	<input type="text" value="0"/>
12th grade - Home School	<input type="text" value="0"/>	<input type="text" value="0"/>	<input type="text" value="0"/>	<input type="text" value="0"/>	<input type="text" value="0"/>	<input type="text" value="0"/>	<input type="text" value="0"/>

Grade Section	DTaP/DT 4 doses or more	Polio 4 doses or more	MMR 2 doses or more	Hep B 3 doses or more	Varicella had disease	Varicella 2 doses	Tdap/Td 1 dose	Ages 11-12 MCV 1 dose	16 Years or Older MCV 1 dose	MCV 2 doses
Kindergarten	<input type="text" value="0"/>	<input type="text" value="0"/>	<input type="text" value="0"/>	<input type="text" value="0"/>	<input type="text" value="0"/>	<input type="text" value="0"/>				
Kindergarten - Home School	<input type="text" value="0"/>	<input type="text" value="0"/>	<input type="text" value="0"/>	<input type="text" value="0"/>	<input type="text" value="0"/>	<input type="text" value="0"/>				
Seventh grade	<input type="text" value="0"/>	<input type="text" value="0"/>	<input type="text" value="0"/>	<input type="text" value="0"/>	<input type="text" value="0"/>	<input type="text" value="0"/>	<input type="text" value="0"/>	<input type="text" value="0"/>		
Seventh grade - Home School	<input type="text" value="0"/>	<input type="text" value="0"/>	<input type="text" value="0"/>	<input type="text" value="0"/>	<input type="text" value="0"/>	<input type="text" value="0"/>	<input type="text" value="0"/>	<input type="text" value="0"/>		

Non-compliant and attending are students who are permitted to attend school without being medically up to date and have no exemption on file.



Medical Exemption

School year beginning: Please enter Year

Please select the active grades within your school (all that apply):

Kindergarten Seventh grade 12th grade

Grade Section	A # of Students Enrolled	B # of Students Medical Exempt	C # of Students Religious Exempt	D # of Students Philosophical / Strong Moral or Ethical Conviction Exempt	E # of Students Enrolled Provisionally	F # of Students Denied Admission or Attendance
Kindergarten	<input type="text"/>	<input type="text"/>	<input type="text"/>	<input type="text"/>	<input type="text"/>	<input type="text"/>
Seventh grade	<input type="text"/>	<input type="text"/>	<input type="text"/>	<input type="text"/>	<input type="text"/>	<input type="text"/>
12th grade	<input type="text"/>	<input type="text"/>	<input type="text"/>	<input type="text"/>	<input type="text"/>	<input type="text"/>

Grade Section	DTaP/DTP/DT 4 doses or more	Polio 4 doses or more	MMR 2 doses or more	Hep B 3 doses or more	Varicella had disease	Varicella 2 doses	Tdap/Td 1 dose	MCV 1 dose	(16+) MCV 1 dose	MCV 2 doses
Kindergarten	<input type="text"/>	<input type="text"/>	<input type="text"/>	<input type="text"/>	<input type="text"/>	<input type="text"/>	<input type="text"/>	<input type="text"/>	<input type="text"/>	<input type="text"/>
Seventh grade	<input type="text"/>	<input type="text"/>	<input type="text"/>	<input type="text"/>	<input type="text"/>	<input type="text"/>	<input type="text"/>	<input type="text"/>	<input type="text"/>	<input type="text"/>
12th grade	<input type="text"/>	<input type="text"/>	<input type="text"/>	<input type="text"/>	<input type="text"/>	<input type="text"/>	<input type="text"/>	<input type="text"/>	<input type="text"/>	<input type="text"/>

Notes:	Report submitted by: (Submitter information based on user information, which can be found by selecting the "My Account" link.)	Was this report completed by a Nurse, School Nurse, RN, CSN, LPN, CRNP, PA, DO, MD, or other medical professional? <input type="checkbox"/> Yes <input type="checkbox"/> No	Is the medical professional the same person as the submitter? <input type="checkbox"/> Yes
---------------	---	--	--

Medical exempt students are those who have been determined by a Physician or their designee, that the child will be harmed if they were to receive the vaccine. The condition for the exemption should be stated. Rarely are all vaccines medically excluded and those vaccines that the child has up to date should be included in this data.

- ❖ Physicians who write a note stating they believe the child is up to date when they are not, is not a medical exemption. These children would be considered as non-compliant.



Students Denied Admission

Add Report

Commonwealth of Pennsylvania
School Immunization Law Report

School year beginning: Please enter Year

Please select the active grades within your school (all that apply):

Kindergarten Seventh grade 12th grade

Grade Section	A # of Students Enrolled	B # of Students Medical Exempt	C # of Students Religious Exempt	D # of Students Philosophical / Strong Moral or Ethical Conviction Exempt	E # of Students Enrolled Provisionally	F # of Students Denied Admission or Attendance
Kindergarten	<input type="text" value="0"/>	<input type="text" value="0"/>	<input type="text" value="0"/>	<input type="text" value="0"/>	<input type="text" value="0"/>	<input type="text" value="0"/>
Seventh grade	<input type="text" value="0"/>	<input type="text" value="0"/>	<input type="text" value="0"/>	<input type="text" value="0"/>	<input type="text" value="0"/>	<input type="text" value="0"/>
12th grade	<input type="text" value="0"/>	<input type="text" value="0"/>	<input type="text" value="0"/>	<input type="text" value="0"/>	<input type="text" value="0"/>	<input type="text" value="0"/>

Grade Section	DTaP/DTP/DT 4 doses or more	Polio 4 doses or more	MMR 2 doses or more	Hep B 3 doses or more	Varicella had disease	Varicella 2 doses	Tdap/Td 1 dose	MCV 1 dose	(16+) MCV 1 dose	MCV 2 doses
Kindergarten	<input type="text" value="0"/>	<input type="text" value="0"/>	<input type="text" value="0"/>	<input type="text" value="0"/>	<input type="text" value="0"/>	<input type="text" value="0"/>				
Seventh grade	<input type="text" value="0"/>	<input type="text" value="0"/>	<input type="text" value="0"/>	<input type="text" value="0"/>	<input type="text" value="0"/>	<input type="text" value="0"/>	<input type="text" value="0"/>	<input type="text" value="0"/>		
12th grade	<input type="text" value="0"/>	<input type="text" value="0"/>	<input type="text" value="0"/>	<input type="text" value="0"/>	<input type="text" value="0"/>	<input type="text" value="0"/>	<input type="text" value="0"/>		<input type="text" value="0"/>	<input type="text" value="0"/> ***

Notes:	Report submitted by: (Submitter information based on user information, which can be found by selecting the "My Account" link.)	Was this report completed by a Nurse, School Nurse, RN, CSN, LPN, CRNP, PA, DO, MD, or other medical professional? <input type="checkbox"/> Yes <input type="checkbox"/> No	Is the medical professional the same person as the submitter? <input type="checkbox"/> Yes

Denied admission represents the number of students who are presently not permitted to attend school due to being non-compliant with vaccination requirements.



Notes Section

Add Report

Commonwealth of Pennsylvania
School Immunization Law Report

School year beginning: Please enter Year

Please select the active grades within your school (all that apply):

Kindergarten Seventh grade 12th grade

Grade Section	A # of Students Enrolled	B # of Students Medical Exempt	C # of Students Religious Exempt	D # of Students Philosophical / Strong Moral or Ethical Conviction Exempt	E # of Students Enrolled Provisionally	F # of Students Denied Admission or Attendance
Kindergarten	<input type="text" value="0"/>	<input type="text" value="0"/>	<input type="text" value="0"/>	<input type="text" value="0"/>	<input type="text" value="0"/>	<input type="text" value="0"/>
Seventh grade	<input type="text" value="0"/>	<input type="text" value="0"/>	<input type="text" value="0"/>	<input type="text" value="0"/>	<input type="text" value="0"/>	<input type="text" value="0"/>
12th grade	<input type="text" value="0"/>	<input type="text" value="0"/>	<input type="text" value="0"/>	<input type="text" value="0"/>	<input type="text" value="0"/>	<input type="text" value="0"/>

Grade Section	DTaP/DTP/DT 4 doses or more	Polio 4 doses or more	MMR 2 doses or more	Hep B 3 doses or more	Varicella had disease	Varicella 2 doses	Tdap/Td 1 dose	MCV 1 dose	(16+) MCV 1 dose	MCV 2 doses
Kindergarten	<input type="text" value="0"/>	<input type="text" value="0"/>	<input type="text" value="0"/>	<input type="text" value="0"/>	<input type="text" value="0"/>	<input type="text" value="0"/>				
Seventh grade	<input type="text" value="0"/>	<input type="text" value="0"/>	<input type="text" value="0"/>	<input type="text" value="0"/>	<input type="text" value="0"/>	<input type="text" value="0"/>	<input type="text" value="0"/>	<input type="text" value="0"/>		
12th grade	<input type="text" value="0"/>	<input type="text" value="0"/>	<input type="text" value="0"/>	<input type="text" value="0"/>	<input type="text" value="0"/>	<input type="text" value="0"/>	<input type="text" value="0"/>		<input type="text" value="0"/>	<input type="text" value="0"/>

Notes:	Report submitted by: <small>(Submitter information based on user information, which can be found by selecting the "My Account" link.)</small>	Was this report completed by a Nurse, School Nurse, RN, CSN, LPN, CRNP, PA, DO, MD, or other medical professional? <input type="radio"/> Yes <input type="radio"/> No	Is the medical professional the same person as the submitter? <input type="checkbox"/> Yes

This section is to document an immunization note.



Data is documented incorrectly

Report Details

HepB + students exempt + students enrolled provisionally cannot be less than % of Students Enrolled.
 Varicella: A student can only be counted in Varicella Had Disease or Varicella 2 doses, not both; Total students vaccinated for both Varicella columns cannot be more than # of Students Enrolled.
 12th grade MCV 1 dose (16+) and MCV 2 doses: A student can only be counted in MCV 1 (16+) or MCV 2 doses, not both; Total students vaccinated for both MCV columns cannot be more than # of Students Enrolled.

School Information: 123456789-1234 - One Great MS Add Report

Commonwealth of Pennsylvania
School Immunization Law Report

School year beginning: 2018

Seventh grade
 There is less than 95% coverage rate/s for Hep B.
 This school has not met the standard for immunization coverage and exemption rates.
 **I certify that the values I entered are correct: Yes

Please select the active grades within your school (all that apply):
 Kindergarten Seventh grade 12th grade

Grade Section	A # of Students Enrolled	B # of Students Medical Exempt	C # of Students Religious Exempt	D # of Students Philosophical / Strong Moral or Ethical Conviction Exempt	E # of Students Enrolled Provisionally	F # of Students Denied Admission or Attendance
Kindergarten	10	0	0	0	0	0
Seventh grade	10	0	0	0	0	0
12th grade	15	0	0	0	0	0

Grade Section	DTaP/DT/DT 4 doses or more	Polio 4 doses or more	MMR 2 doses or more	Hep B 3 doses or more	Varicella had disease	Varicella 2 doses	Tdap/Td 1 dose	MCV 1 dose	(16+) MCV 1 dose	MCV 2 doses
Kindergarten	10	10	10	10	0	10				
Seventh grade	10	10	10	1	10	10	10	10		
12th grade	15	15	15	15	0	15	15		15	15

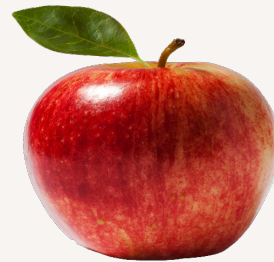
Incorrect data entry will be highlighted in yellow and an explanation in red will be in the "report details" box at the top of the screen.

You will not be able to move forward until this information is corrected.



Immunization Review

Before we can report accurately, we must know how to review and record immunization data.



Immunization Review DTaP

DTaP 4 doses or more

1st dose minimum age 6 weeks

2nd dose- at least 4 weeks after 1st dose

3rd dose- at least 4 weeks after 2nd dose

4th dose- at least 6 months after 3rd dose (final dose if given after age 4 and 6 months after the 3rd dose)

5th dose- at least 6 months after 4th dose

❖ Children may have 4 doses and be considered up to date if the 4th dose is given at least six months after the 3rd dose and the child is over the age of 4 years.



Immunization Review Polio



Polio (IPV)- 4 doses or more

1st dose- Minimum age 6 weeks

2nd dose- Minimum 4 weeks after 1st

3rd dose- Minimum 4 weeks from 2nd dose if less than 4 years old.

3rd dose can be considered final dose if there is a minimum of 6 months from 2nd to 3rd dose and if current age is 4 years or older.

4th dose Minimum 6 months from the 3rd dose – Minimum age 4 years for final dose.

Polio (IPV)- 4 doses or more. The child may be considered up to date with 3 doses if the final dose was given when the child is at least 4 years of age and 6 months from the second dose.

Unvaccinated students who are 18 years of age or older, must be fully vaccinated with 3 doses.



Immunization Review – Oral Polio



Doses of OPV administered on or after April 1, 2016, are either Bivalent Oral Polio Vaccine, OPV, bOPV (used in routine vaccination and campaigns), or Monovalent Oral Polio Vaccine, mOPV (used in a type-specific outbreak response); these doses do not count towards the U.S. vaccination requirements for protection against all three poliovirus types.

- ❖ No doses of OPV given after April 1, 2016, are acceptable and the child should be revaccinated.



Immunization Review MMR

1st dose 12 months or older

2nd dose 4-6 years of age and at least 4 weeks from 1st dose.

Maximum age for MMRV is 12 years.

- ❖ MMR must be given the same day as Varicella or at least 28 days after, as both are live viruses.



Immunization Review Hepatitis B

Hep B - 3 doses or more

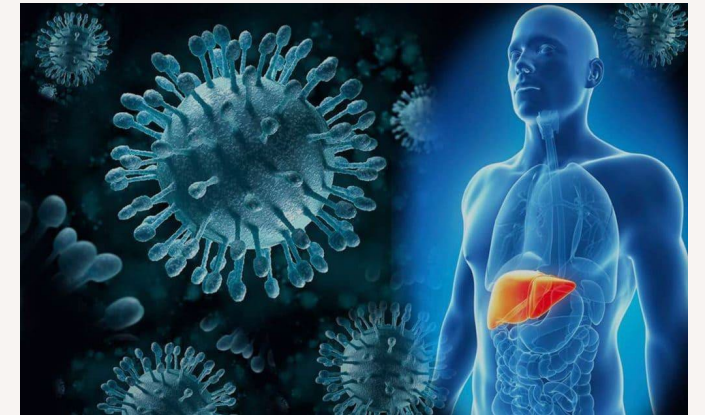
1st dose - Minimum age - Birth

2nd dose - 1-2 months of age and at least 4 weeks after 1st dose

3rd dose - 6 to 18 months of age. Minimum spacing is 8 weeks after 2nd dose, and at least 16 weeks after 1st dose.

Minimal age for final dose is 24 weeks

The adult formulation Recombivax HB is a 2-dose series that is approved for children that are 11 through 15 years of age. This is acceptable only if you are able to prove, through vaccine records, that Recombivax HB was the vaccine used.



Immunization Review Varicella

Varicella- 2 dose

1st dose – 12–18 months Minimum age 12 months

2nd dose 4-6 years Minimum spacing from dose 1 to 2 is 3 months.

- ❖ Varicella must be given on the same day as MMR or at least 28 days after, as both are live viruses.



Immunization Review Varicella

Varicella- had disease

If there is a history of chicken pox disease or shingles and also history of varicella immunizations, document in the “had disease” column in the SILR.

Varicella disease can be verified by laboratory evidence of immunity or a written statement of history of chicken pox disease from a parent, guardian, physician, a nurse practitioner, or physician assistant.



Immunization Review Tdap

One dose of Tdap for students for entry into 7th grade or for entry into the school year that the student is 12 years of age.

Pennsylvania immunization code states that Tdap is required for entry into 7th grade.

The preferred age of Tdap is 11 – 12 years of age but if given at age 10 it is accepted.



Tdap Guidance

Routine Tdap is administered at age 11-12 years.

Tdap administered at 7–10 years:

-Children ages 7–9 years who receive Tdap should receive the routine Tdap dose at ages 11–12 years.

-Children aged 10 years who receive Tdap do not need to receive the routine Tdap dose at ages 11–12 years.



Immunization Review MCV

MCV - 1 dose

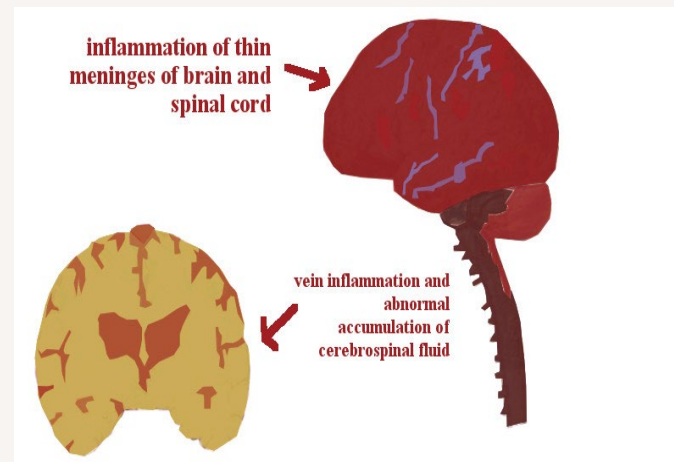
MenACWY or Men ABCWY

This is not Men-B.

The combination vaccine, Men ABCWY, is acceptable.

This section is only to record the first dose due in 7th grade.

1st dose at 11-12 years of age is preferred, age 10 is acceptable.



The MCV dose required for 7th grade is not the Meningitis-B vaccine. Men-B is a different vaccine that is recommended but not required by Pennsylvania immunization code. Meningitis B only contains the B strain of meningitis, Men ACWY contains more.

If a 7th grade student has one MCV dose at ages 10 to 12, mark it in the "one dose MCV" box in the SILR.



Immunization Review MCV

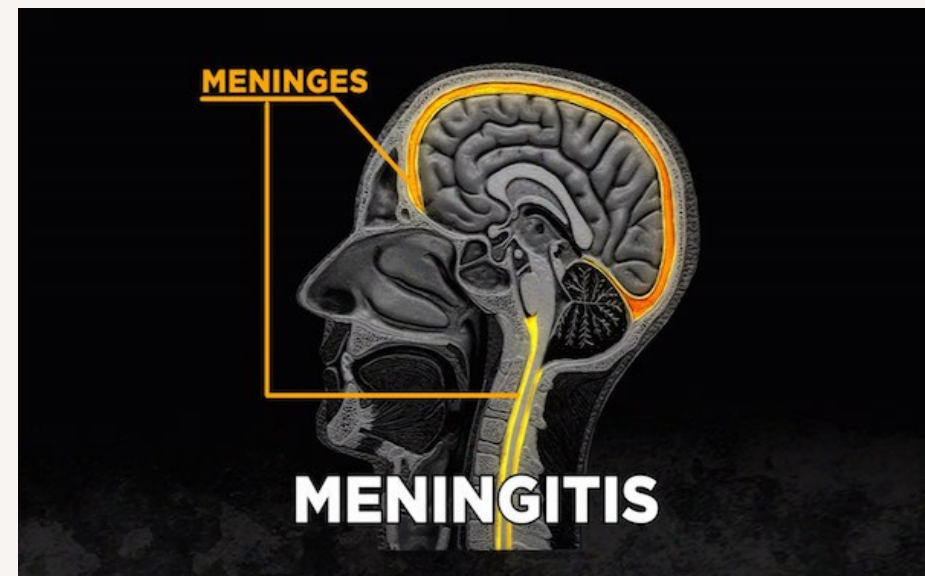
MCV 2 doses

1st dose 11-12 years old

2nd dose 16 years old. Minimum interval between dose 1 and dose 2 is 8 weeks.

If a 12th grade student receives two doses, one at age 11-12 and one after age 16, record it in the "MCV 2 doses" box only in the SILR.

Do not record it in "MCV 2 doses" box and in the "16+ MCV 1 dose" box for the same student.



Immunization Review MCV

16 + MCV 1 dose

MenACWY or Men ABCWY

This is not Men-B, which is not accepted for the requirement.

The combination vaccine, Men ABCWY, is acceptable.

If students received **only one dose** of MCV **at age 16 years** or older this is recorded in the “16 + MCV 1 dose” box, and the student is considered up to date.

This one dose column is **only for 12th grade students who are age 16 or older**. If the child only has one dose prior to age 16 and is in the 12th grade, they are not up to date and must be listed as non-compliant in the SILR.



Titers for Vaccine Preventable Diseases

There are two vaccine preventable diseases that can be tittered to prove immunity and not receive the vaccine.

1. Varicella
2. Hepatitis B

All other vaccine preventable diseases are connected to vaccines that have components that cannot be tittered.

One example would be the measles titer. Measles can be tittered, but the mumps component of the MMR cannot. This would make the titer for measles not useable.



SILR Questions - General Information

- **Question 1: Is this survey required for homeschooled children?** Yes, homeschooled children should be counted in the school that they would normally attend if registered as public attendance.
- **Question 2: Where do I find the AUN for my school?** You can contact your school administrator or look for the school in the EdNA tab on the educational links in the blue banner on the front page of the SILR. Only enter one of the school names to search.
- **Question 3: Can the school nurse change his/her name, email address and/or telephone number?** Yes, the school nurse can make necessary changes to his/her name, email address, or telephone number in the login page or in My Account on the SILR website.
- **Question 4: If I am reporting for two different schools in the same district, can I enter both in the same report?** No, enter each school separately under their own separate AUN numbers.
- **Question 5: Should I enter first grade in the school report?** No, you are only required to report kindergarten, seventh, and twelfth grades and the homeschool students of those grade ages.



SILR Questions - General Information

- **Question 6: Can I use the same Login that the previous nurse used?** No, your Login should be kept confidential. Never use anyone else's Login. This is considered a security breach in the system. You should create your own login, creating your own password and should keep it in a safe place.
- **Question 7: My school has merged with another school; what nine-digit AUN and a four-digit school/branch number do I use?** Contact your school administrator for the current nine-digit AUN and four-digit school/branch number. You can also look in EdNA, link included on the SILR website.
- **Question 8: My school just moved to a new location, and I cannot find it listed under my schools that I report.** Contact your school administrator for the current nine-digit AUN and four-digit school/branch number. Follow the instructions for adding a school to the online SILR.
- **Question 9: If a child has all doses specified of a certain antigen, BUT one of the doses was administered more than four days before the recommended interval, would he/she still be considered up-to-date?** No, the immunizations must be given at the recommended minimum interval to be counted as up-to-date with a maximum number of days prior to the minimum interval of 4 days for most vaccines. **Live attenuated viruses** such as MMR and Varicella do not have the 4 days added to the minimum interval. They must be given on the same day or at least 28 days apart.





Pennsylvania
Department of Health

Thank you
Discussion: questions, comments,
and concerns?

Bureau of Immunizations
717-787-5681

The SILR

<https://apps.health.pa.gov/silr/>

Pennsylvania Immunization Code Title 28, Chapter 23

<https://www.pacodeandbulletin.gov/Display/pacode?file=/secure/pacode/data/028/chapter23/s23.82.html&d=reduce>

